



Magic Valley Gem News



Magic Valley Gem Club, Inc. P.O. Box 725 Twin Falls, Idaho 83303

Magic Valley Gem News — January, 2012

Volume 51 issue 01 — page 1

Next meeting will be

January 19, 2012

7:00 p.m.

Location:

**Rosenau's Community
Room**

Come prepared to talk about the
SHOW.

This is when we get really
serious about the Show!!

Believe it or not it is only 2
months away!!!

Sign-up sheets for volunteering
will be available.

Magic Valley Gem Club
60th Annual Gem Show

March 10 and 11, 2012
Sat 9—6
Sun 10—5

**BIGGER
AND
BETTER
THAN
EVER**

The Magic Valley Gem News is published monthly. The Editor is not responsible for the accuracy of the articles accepted, items for sale, nor are the opinions expressed therein necessarily those of the Officers, Members and/or the Editor of Magic Valley Gem Club, Inc.

Presidential Views from the Rockpile . . .

Happy New Year!

Please be sure to invite anyone interested in Rock Hounding to join us. It is very important for everyone in the club to take time to extend a hand of fellowship to those whom we can involve and help them to join with us.

First let's look back at some accomplishments from the past year. Club membership up by ten percent, getting the Club Library inventoried and a published list for members, getting more schools in the area involved with Club member school visits, providing more training for members on various areas of rock work, getting the Club MEMBERS more involved in writing letters to our congressmen about their needs about Rock Hounding on public lands.

The second additional Gem Club Show trailer is ready. What can I say! It is a needed addition and will house the last unloaded items and the first loaded items for the show. It will really help speed up the setup and tear down of the Show. Plus it will prevent many costly accidents which tend to happen when there is not a place to put things away. **THANK YOU, HAROLD and PERRY WAGGONER FOR ALL YOUR HARD AND DILIGENT WORK ON THIS LONG AND TRYING TASK.**

Please note: with the addition of the second trailer for the Show we now have a permanent secured place for those individuals whom have donated memorial or honorary case materials which can be displayed each year on behalf of past members. Each donation should fit into one of our show cases along with a Picture and back ground information on the donation. We presently have three donations from families of past members. Contact President Rocky Metts at 423-4827 if you wish to donate to the Show's permanent exhibits.

OUR CLUB IS A MEMBER OF THE PUBLIC LANDS ACCESS COMMITTEE AND AS SUCH EACH MEMBER OF THE MAGIC VALLEY GEM CLUB IS A PAID MEMBER. SHIRLEY METTS IS THE CLUB REPRESENTATIVE AND WILL KEEP US INFORMED OF GOVERNMENT ACTIONS ON PUBLIC LAND S ISSUES..

Thank you to last year's Field Marshall Rebecca Yancey and all those who helped lead the many wonderful field trips. Our new Field Marshall DeVonne Bates and assistants are planning many wonderful trips which will include a few overnighters. These will be wonderful times for rock hounding and fellowship, but you must setup and volunteer to lead one or two if you know of a place to go. They have been asked to provide a tentative list of trips in the early part of 2012. If you have a place you wish to go with the club, please contact the Field Marshalls.

January will be the sign up month for the show. **Please sign up for various work assignments and commit to being there.** When someone has to stay for extra time because someone didn't show up, it takes a lot of the fun out of it and then our guests have to experience less than our best .

This year we will provide help to anyone who needs assistance in getting their displays loaded, transported and setup for the show. Yes, and then help taking them back home again. Let any member of the Executive Board know of suggestions of goals the Club should take on as improvements for the coming year. Your New Board will be meeting in February to set goals and make plans for the new year.

Rocky Metts 423-4827 or email rnsmetts@centurylink.net

2012 OFFICERS & CLUB INFORMATION

EXCHANGE

NEWSLETTERS

If you are interested in exchanging newsletters, please send me a copy of your newsletter and I will return one of ours. My address is:

Shirley Metts
550 Main Street South
Kimberly, ID 83341
Or electronically to
rsmetts@centurylink.net

No one can make you feel inferior unless you allow them to.

-Eleanor

WELCOME to all our new members. We have had many new members joining the Club and we want to take this opportunity to welcome you. We invite you to attend our monthly meetings and go on our field trips. Also, we would ask you to share your expectations of this club and invite you to participate by filling a position and sharing in the activities of the Club.

WELCOME NEW MEMBERS



- President:** Rocky Metts 208-423-4827
550 Main St. South
Kimberly, ID 83341
- Vice-Pres:** Dave Hughes 208-886-2014
P.O. Box 1042
Shoshone, ID 83352-1042
- Secretary:** Wilma Sellers 208-829-5068
1277 S 1845 E
Hazelton, ID 83335
- Treasurer:** Susan Lewis 208-420-7843
717 Cherokee Lane
Twin Falls, ID 83301
- Field Marshall:** DeVonne Bates 208-837-4137
2751-A . S. 900 E , Box 726
Hagerman, ID 83332
- Bulletin Editor:** Shirley Metts 208-423-4827
550 Main St. South
Kimberly, ID 83341
- Show Chairman:** Shirley Metts, 208-423-4827
550 Main St. South
Kimberly, ID 83341
- Fed. Director:** Barbrah Livingston 208-731-1942
3338 N 3300 E
Kimberly, ID 83341

Committee Chairs

- Sunshine Lola Betty
- Show Publicity. Julie & Terry Folks
- Hospitality Sandy Hansen
- Historian Harold Waggoner
- Librarian Barbrah Livingston
- Safety Officer Mark Livingston
- Webmaster Jason Metts
- Programs Chairmen. . . Dave & Pat Ziegler
- Asst Field Marshall ... Sandy Hansen
- Asst Field MarshallJim Glenn
- Asst Field MarshallRex Borjas
- Service Mel Pingel
- Nominations Chmn Bob Sellers
- Education Dave Hughes

Club General Membership Meeting:

Meetings are held the third Thursday of each month at Rosenau's Community Room, 2826 Addison Ave. E.

Twin Falls. (Just west of Kimberly Nurseries and D&B Supply.)

Demonstrations/Programs and socializing at 7:00 p.m. Business Meeting at 8:00 pm Exceptions are July and August when we picnic and barbecue at the Kimberly City Park and November - our annual Thanksgiving dinner at a local restaurant..

VISITORS ARE CORDIALLY INVITED!

Membership Dues:

Yearly membership dues for MVGC are \$10.00 for adult members (New members add \$2.00 for name tags) and \$5.00 for Junior members.

For more information or an application, contact Rocky Metts—423-4827 email: rmetts@centurylink.net

General Objectives of the Club:

To promote interest, knowledge and understanding in the various earth sciences, as in Geology, mineralogy, Paleontology and lapidary and other related subjects. To sponsor and provide means of coordinating the work and efforts of all persons interested therein.

Helping Others:

The club participates in the NFMS stamp program, saving large commemoratives, airmail, pre-canceled, foreign and "ordinary" stamps of all values. Proceeds from stamp sales will be used to benefit any charity deemed worthy by the NFMS Endowment Fund

Permission to reprint is granted if acknowledgement is given. We reserve the right to edit all material submitted for publication.

THE NORTHWEST NEWSLETTER is published 11 times a year. Copies are sent to each member's household. The cost is included in your annual dues.

Two free copies of the **AFMS NEWSLETTER** are mailed to each member club. Subscriptions are available at \$3.50 for 9 issues. Send payment to:

American Federation of Mineralogical Societies
PO Box 26523 Oklahoma City, OK 73126.

We are affiliated with

- Northwest Federation of Mineralogical Association
- American Federation of Mineralogical Societies
- The American Lands Access Association

Visit Us At www.magicvalleygemclub.org or on Facebook at Magic Valley Gem Club
Please e-mail Shirley at rmetts@centurylink.net to get on our email list..



Magic Valley Gem Club Field Trips for 2012

Call DeVonne Bates if you have ideas of places you would like to go.

Our Field Marshalls are planning many wonderful trips which may include a few overnights. These will be wonderful times for rock hounding and fellowship. DeVonne would like you to contact her regarding places to go and material to be found. If you have a place you wish to go with the club, please contact the Field Marshalls. It can be local, farther away, to a site, to a rock store, to a museum, to a claim. Just talk to DeVonne and let her know what you would like to do or show. DeVonne Bates: 208-837-4137.

***Check on www.magicvalleygemclub.org and/or on Facebook to see if there are any changes.

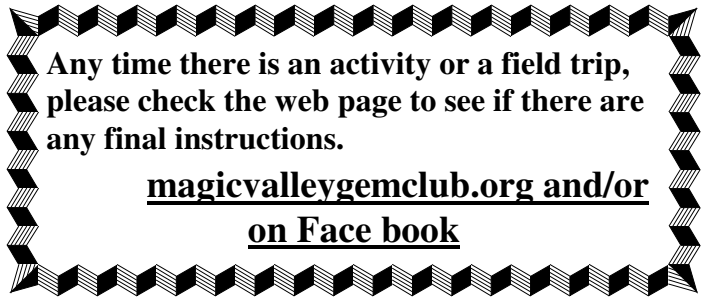
DUES ARE DUE - NOW!! Send to PO Box 725, Twin Falls, Idaho 83301. If your dues are not paid by January 15, you will be dropped off the club roster.



— Sick or need some prayer? Please let us know so we can have a Sunshine Report again, and send out cards!



Please contact **Lola Betty** — our Sunshine Lady phone 423- 9764.



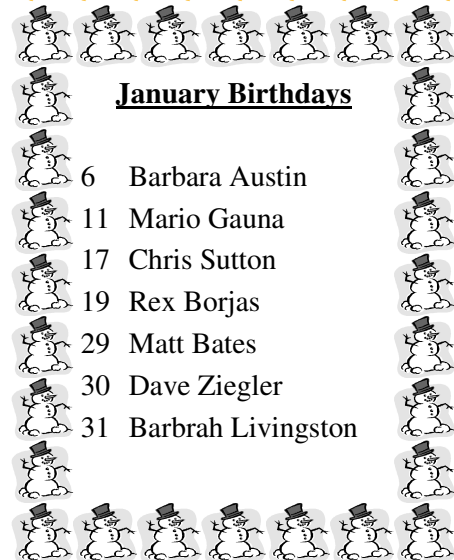
Any time there is an activity or a field trip, please check the web page to see if there are any final instructions.

magicvalleygemclub.org and/or on Face book



DRAKE AND ELLY FOLKS

DID YOU SEE THE NECKLACE THAT DRAKE FOLKS MADE FOR HIS TEACHER? HIS DAD SHOWED HIM WHAT TO DO AND HOW TO DO IT—AND IT TURNED OUT BEAUTIFULLY. ELLY MADE ONE ALSO BUT I DID NOT GET TO SEE HERS. OUR JUNIORS ARE REALLY COMING ALONG. CONGRATULATIONS, DRAKE AND ELLY, ON A JOB WELL DONE.



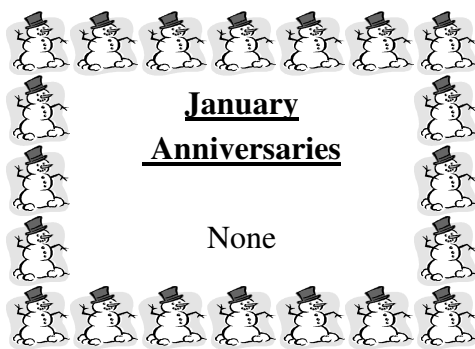
January Birthdays

- 6 Barbara Austin
- 11 Mario Gauna
- 17 Chris Sutton
- 19 Rex Borjas
- 29 Matt Bates
- 30 Dave Ziegler
- 31 Barbrah Livingston

HAPPY NEW YEAR

January Anniversaries

None



If any of your information is incorrect, please call and let me know so I can correct the problem. Shirley Metts—423-4827

CACHE VALLEY CLUB

Our club in Cache Valley is hosting a Rock and Gem Show in May, and we are looking for demonstrators, and anyone who would be interested in booth space. Anyone interested please contact me. If interested, contact Robin Williams at the Cache Valley Rock Club Face book page.

SHOW PLANNING: We need everyone to help with the show— physically at the show or if you cannot make the show you are encouraged to help with donations of items or making prizes for the wheel of fortune. These are the chairpersons for the following events. All members are encouraged to help. Share your talents and help make 2012 a great show.

- ⇒ Alice Clements needs help with WHEEL of FORTUNE prizes. They will be having a workday again. Last year's was a lot of fun.
- ⇒ Rocky Metts needs WHEEL of FORTUNE prizes for the Rock Wheel. Visit with him to see what he has in mind. These are smaller specimens than what we would have on the Silent Auction.
- ⇒ The SILENT AUCTION needs quality items donated. If you wouldn't want to buy it yourself, don't expect anyone else to want it either. (Finished material, Slabs, Cabs would be welcomed, also magazines, books related to rocks.)
- ⇒ Dick Morris needs tumbled rock for the GRAB BAGS and more grab bags.
- ⇒ Jon Cromer needs DOOR PRIZES. Please keep the door prizes "Rock Related" if possible. After all, this is a "Rock and Gem Show." (Finished materials, Slabs, Cabs, Jewelry, etc.)
- ⇒ Chris Sutton needs tiny rocks donated for the sand dig, also some sand and a tub to hold the sand.
- ⇒ If you have other ideas, please contact me – Shirley - at 423-4827 and give me your suggestions. Items can be brought early to Shirley Metts or Jon Cromer (assistant show chairman) **DO NOT GO OUT AND PURCHASE SOMETHING UNTIL THE SHOW CHAIRMAN HAS APPROVED IT. UNAPPROVED PURCHASES WILL NOT BE PAID FOR BY THE CLUB.**

PERILS OF THE HUNT —

As all rock hounds know, there comes a point in time when it is real hard to stay cooped up in the house. The first nice day with no wind, no rain and snow several of us headed for the wide open spaces of Nevada below Contact NV. Dave & Ruth, Sandy and Tyler and myself braved the elements.

I had spotted a place that I was sure would have petrified wood. We headed that way at 9 am. We got there and parked in a turn-out on the highway and proceeded to cross the barb wire fence. We climbed and looked but found nothing. Dave decided that it was an old rock crusher site used by the highway dept.

We left there and drove up another road. After we drove for a while we decided that the road was too bad even for 4-wheel drive as we were sliding down to a point that it was a large drop off. We turned around and headed back home. We stopped at Rabbit Springs to get some Geodes/aka/thunder eggs. We had to dig and the ground was frozen so it was slow going. Dave found a deep hole and was digging and finding a few. I was digging a little bit above him and was finding a few also. The sun was going down and the nice day turned rather cold and we decided to go.

I was climbing out of the hole I was in and because of the nice day the snow and ground was melting. My foot slipped and I knew I was going to fall. Dave was still in the deeper hole and I was going to fall on his back. I didn't want to have 200 lbs fall like dead weigh on Dave's back, so I made a big effort to jump over him. I made it to the other side of the hole but my feet slipped on the edge and I twisted my body and landed on my left hip causing great pain. Again, I was proud of me as I did not cuss. Oh well, such is life in the day of a rock hound. (I would have made the jump across the hole if I would have had my superman cape.)

— Written by Jim Glenn, received First place Award for Original Adult Article in the NFMS Bulletin Contest.

CHECK IT OUT!

Magic Valley Gem Club Library.

We have lots of interesting books, CDs , videos and magazines in the Library — Our Librarian, Barbrah Livingston—is working on a list which we will print a part of each month in the newsletter. The entire list will be published on the Web Site. All members are encouraged to check out items from the Library. Just contact the librarian to see what is available—until such time as we can begin printing the list. Check out time is one month.

CLUB LIBRARIAN is Barbrah Livingston—731-1942



Last year's Grand Prize winner - Ron Rhodes

GEM SHOW INFORMATION

Dick brought in a copy of a show flier that looks like a great idea. It has a diagram of the entire show events and activities so people will know where things are located. As in most good ideas there is a catch. This has a cost associated with it and we have not designated any monies towards it. Therefore, on the back of the flier We will sell advertising spaces at \$10.00 per business card sized ad, \$5.00 for half the size of a business card.

We need donated the following items: Door Prizes, small (teeny-tiny) gemstones for the sand dig, wheel of fortune prizes for the kids wheel and also rock related items for the \$1.00 wheel. We also need a tub (old silver water trough or tub) to put the sand in for the sand dig and the sand to put into the tub. We need items for the silent auction, and tumbled rocks for the Grab bags. Dick is giving a prize for the most tumbled rock donated.

**A HUGE THANK YOU TO
REBEKAH YANCY AND
STEVE BARNES FOR THE GREAT
JOB THEY DID IN THEIR
POSITIONS LAST YEAR.**



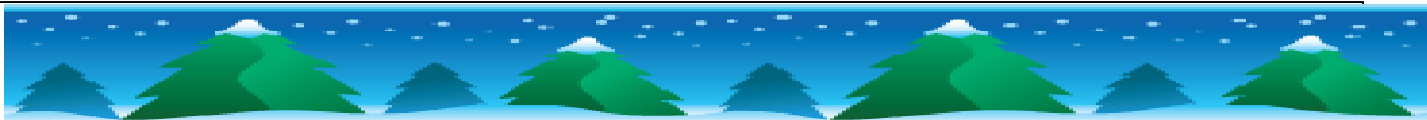
Garnet—January’s Birthstone

Garnet is the official birthstone of January. The rich red stone mixes well with gold-colored metals and the soft pink colors of pink sea "opal glass," Peruvian pink opal and rose quartz gemstone beads. The deep, glossy red color of garnet resembles the juicy seeds of a pomegranate, which is perhaps why its name is derived from the Latin word for pomegranate seeds, granatum. In Greek mythology, a pomegranate was often given as a gift of passion and associated with eternal love. In ancient history, travelers wore garnet gemstones because they were believed to light up the night and provide protection from nightmares and accidents. In the middle ages, garnet was commonly believed to guard against poison. Royals would often drop a garnet gemstone into a glass of wine to ensure they were not poisoned to death. Garnets were also worn by the crusaders as an aid to safely find their way home. Eastern European folktales speak of garnets being worn around the neck to guard against night-wandering vampires. Garnets were also used in burial jewelry and carved signet rings to proclaim royalty during the Bronze Age (300 BC).

Garnet symbolizes a quick return to a separated love, fertility and feminine life force. Legend states that Hades gifted a pomegranate to Persephone before she left his domain to ensure a speedy and safe return. When she did return, the fruit transformed into a handful of the red gemstones. A garnet stone is often gifted to a loved one before they embark on travel. Garnets are commonly believed to aid in the healing of broken bonds of love. Garnets are also known to aid in the treatment of melancholy and depression by acting as a heart and blood stimulant.

Garnet is thought to be extremely beneficial in the realm of business. The stone can attract people to the wearer, which can help provide personal and business success. It is especially beneficial to people wanting to start home businesses.

Submitted by Dave Hughes



MORE SHOW INFO.

AT OUR JANUARY MEETING, we will have the sign-up sheets for helping at the various show activities in March. Please think of the times you would be available to assist at the show and commit to those time slots. Harold is also bringing a case to set us so everyone can see how a case is set up with the liners in it.]

ALSO, We will have the case sign-ups available that night—with instructions on how to make liners for the cases.

NO ANIMALS ALLOWED INSIDE THE BUILDING AT THE SHOW!! PLEASE — PLAN ON LEAVING YOUR ANIMALS OUTSIDE THE BUILDING— THERE WILL BE NO ANIMALS ALLOWED AT THE SHOW—DURING SET-UP, THE SHOW ITSELF, OR DURING TAKE-DOWN. THIS IS AS MUCH FOR THEIR SAFETY AS IT IS FOR WORKERS SAFETY. Exceptions will be made for seeing eye dogs only .

If you wish to use overnight camping facilities at the fairgrounds you must work with Bonnie at the Fairgrounds. There is a \$15 fee (last year) if you use electrical hook-ups. Otherwise it is free without electricity. Fairground phone number is 208-326-4396. Please call them for reservations.

EXECUTIVE BOARD MEETING MINUTES

Magic Valley Gem Club Executive Board met at the home of President Rocky Metts on December 10, 2011, at 7:00 p.m. In attendance were President Rocky Metts, Secretary Wilma Sellers, Treasurer, Susan Lewis; Show Chairman and Bulletin Editor, Shirley Metts, Assistant Show Chairman Jon Cromer, Show Advisor Harold Waggoner. Treasurers report given and a motion made to accept by Shirley Metts, second by Jon Cromer, approved. Secretary recorded presented—motion to accept made by Jon Cromer, seconded by Harold Waggoner. Accepted. A motion was made by Shirley Metts to present name tags at 3rd meeting new members attend. Second by Jon Cromer. Approved. Motion presented by Wilma to amend By-Laws Article 3 Section 3 to say “membership card good as long as member is in good Club standing.” Second by Shirley Metts, Approved. General operation of club discussed. Jon Cromer presented motion for Show advisor , Harold Waggoner be responsible for names in Memorial Case. Second by Wilma Sellers Motion presented by Susan Lewis and second by Jon Cromer that new members may pay dues at Show . First reading will be read at next meeting in April. Approved. Motion made to adjourn by Wilma Sellers, seconded by Harold Waggoner. Approved. Jon Cromer voted as proxy for Show Chairman. Meeting adjourned.

Minutes respectfully submitted by
Wilma Sellers, Secretary

The 5-Minute Drill

by Owen Martin, AFMS Safety Chair

I’ve written periodically over the last few years about emergency preparedness so that if some type of weather event may impact you that you have water, food, batteries, first aid kits etc. I typically made two assumptions, one being that you would have enough time to “pack and evac” in the case of something like a hurricane, or the other, that you were prepared to deal with the aftermath of a storm event like a tornado or storm front.

Unfortunately the recent wildfires in the south-central USA has brought up another instance to consider for emergency preparedness.

Local emergency responders were forced to provide a “5 -minute evacuation order” for hundreds of home owners in the vicinity of several wildfires. Those orders prompted a lot of discussion in the local media about how to comply and still save what you think is important. The first wave of feedback was to protect your loved ones and pets, and get in the car and go. That however did not reflect the fact that the authorities were providing a small amount of time to actually pack a few things before leaving.

In other words, don’t panic!

If you can organize yourself prior to such an event then you can practice it similar to a family fire drill.

At my home we determined that there would be a division of labor that would help us save more than just our skins and the clothes on our backs. So as an example:

Dad: medicines and safe deposit box key, parent clothes.

Mom: photo albums

Child #1: laptops and clothes

Child #2: pets and pet food, clothes

Child #3: clothes and school backpacks

Likely that gives everyone time for two quick trips to dump everything into the van, car or truck. Little things like family wall photos could certainly be grabbed on the way out, too. I might even grab a couple of fossils or an arrowhead! It would really depend on how quickly we could move.

The point being we prioritized what we would do: who would get what first and second trips, and then be ready to go.

I would recommend you consider a “5-minute” drill in your own household so that if you are forced to evacuate on short notice that you can do so in a calm and efficient manner, gather personal effects that have a high value to you, and still get out safely. From AFMS News, Nov/Dec 2011pg.4

ARTICLES FOR NEWSLETTER

If you send me articles that you would like to have printed in the newsletter, please state specifically that they are for the newsletter. I will be glad to include them, providing there is space available in that issue. I may need to modify them to fit into the space available.

Copyright laws prohibit the inclusion of any submissions which are not your own unless written permission is obtained and then credit is given to the author and source is stated.

BUY, SELL, OR TRADE

Stainless Steel TS10-C Trim Saw. The perfect choice if you hate rust! The worktable has a 14-1/4" x 16-5/8" work surface and centered blade. Includes 10" diamond blade, sealed ball bearing arbor, arbor pulley, 3/4" steel shaft, 1/3 hp motor, belt blade guard, plastic hood, vise and mounted base dimensions: 14 1/2"W x 27 1/2" L . Requires 2 quarts of cutting oil. #059-093 \$600.00 **New Jim & Jacque Yandle, 860-3007 5599 S. Santa Cruz Way, Boise, Idaho 83709**

ALAA News

by Dick Pankey, President

Over the last several weeks I have received numerous e-mails announcing the release by the BLM of Draft Land Use Plans and announcing meetings for public comment. In a few cases there were announcements of "Call for Input" and "Scoping Meetings", the first step in developing a Land Use Plan, the plan on how the BLM or USFS is to manage the land for which they are responsible for the benefit of the public and for the land. By law the BLM and USFS are required to have public input at all stages of a Land Use Plans. That is where we, the rockhounds, the users and recreationist of public lands come in – We are the Public. We have a right and obligation to express our ideas and our wishes on how the land is to be managed and used.

How can we do this? We can write letters and e-mails responding to other people's ideas; often those of conservationist/preservationists, people who want to restrict access and use. Or we can be proactive and we can get involved directly in the regulatory process. To do this we need you, the rockhounds and users of our public lands, to get directly involved with each and every BLM and USFS district and office. All of us and every society lives within 100 miles or less of a BLM or USFS office or we often drive past one. The next time you see an office stop and go in. Ask to speak with the Recreation Officer, Land Use Planner or Geologist. Ask about things you are interested in: collecting, camping, road access/closures, and ask about their Land Use Plan. This is a start to being involved with

the regulators.

How can you get involved? It is easy. First check out the BLM and USFS web sites. These sites give you information about the regulators; about the staff and the location of the District and the Field Office. These sites will have information about the current Land Use Plans, about the area that they manage, and sometimes information about permitted uses and access. And most of all there will be information about pending Land Use Plans and proposed changes. If you see that there is pending new or changes to their Land Use Plans, it is time to take action and get involved.

Contact the specific office and tell them you want to be put on the contact list for the LUP and ask for the planning schedule and schedule of meetings. Inform your ALAA State Representative (or any ALAA officer or director), your society and other rockhounds and interested people about the plans for updating the LUP and get them to attend meetings with you. We want to be part of the development of a LUP, not responding to somebody else's ideas. It is easier to have our ideas and wishes incorporated as a plan is developed than try to have unfavorable wording removed from a finalized "Draft Plan."

The Land Use Plans that are in development today affects how we will be able to use and have access to these public lands for the next few decades! How do you want your public land managed, by the users or by the preservationists?

Be involved in the future!

AFMS Newsletter, Nov/Dec, 2011 pg. 10 and 12.



LET'S GO TO A SHOW

No shows are listed for January.



We need new dealers for our show this year. If you know of someone, tell them to contact me, please. Shirley Metts, Show Chairman, at 208-423-4827 or rnsmetts@centurylink.net

2012—MVGC Refreshment List

. You are expected to bring desert or snacks and

We need to get the list started for next year—Please call Sandy (736-3380) to pick your date to bring refreshments!!

January

February

March

April

May

June

July

August

September

October

November

December

TAKE TIME TO GET TO KNOW THE NEW MEMBERS OF THE CLUB. THEY HAVE A LOT TO OFFER IN KNOWLEDGE AND ENTHUSIASM. .

**United States Representative
Mike Simpson
1339 Longworth House Office Bldg
Washington D.C. 20515
Web site: www.house.gov/simpson
Phone: 202-225-5531
Local District Office:
1201 Falls Avenue East
Twin Falls, Idaho 83301
Phone: 208-734-7219**

**United States Senator Mike Crapo
United States Senate
239 Dirksen Senate Office Building
Washington D.C. 20510-1024
Voice mail: 205-734-2515
Email:
<http://crapo.senate.gov/contact/email.cfm>
Local District Office:
202 Falls Avenue, Suite 2
Twin Falls, Idaho 83301**

CONSERVATION AND LEGISLATIVE NEWS

By John Martin, AFMS Chair

Status of Legislation Affecting Rockhounding on Public Lands

The following legislation before congress may have a direct or indirect affect on Rockhounding on Public Lands held in trust for the American People and managed by the BLM and/or USFS. As of September 1, 2011 these proposed bills are all held in committee and are being reviewed by these committees. No action has been completed since their introductions.

H.R. 758: National Monument Designation Transparency and Accountability Act - 23 cosponsors

H.R. 1581: Wilderness and Roadless Area Release Act of 2011 - 31 Cosponsors

S. 1087: Wilderness and Roadless Area Release Act of 2011 - 5 cosponsors

S. 138: California Desert Protection Act of 2011 - No cosponsors

S. 268: Forest Jobs and Recreation Act of 2011 - 1 cosponsor

H.R. 1990: Saguaro National Park Boundary Expansion and Study Act of 2011 - No cosponsors

S. 1475: Nellis Dunes National Off-Highway Vehicle Recreation Area Act of 2011 - No cosponsors

The full text and the current status of this pending legislation, that may have an affect on Rockhounding or collecting site access, may be found on the American Lands Access Association's website, www.amlands.org/6652/index.html

For more information on Parks, recreation areas and trails see the following website: www.govtrack.us/congress/subjects.xpd?type=crs&term=Parks,%20recreation%20areas,%20trails

The committee has not received any requests for investigations or concerns of conservation or legislation from any of the regional federations. NFMS Newsletter, Nov/Dec,

MINUTES of DECEMBER 15, 2011 MEETING

Magic Valley Gem Club Christmas Party/meeting was held December 15, 2011 at 6:00 p.m. with 47 members and 3 visitors present. Lots of real good food and lots of fun socializing. President Rocky Metts called the meeting to order. Treasurer gave her report. Dick Morris presented motion for Harold Waggoner as show advisor to be responsible for Memorial Case. Chris Sutton seconded—club vote was unanimous. The By-Law Article 3, Section 3 to be amended to say “membership cards good as long as member is in good Club standing. Motion made by Dick Morris, seconded by Rex Borjas, voting was unanimous. Motion made by Dave Hughes, seconded by Tony Funk—new sign-ups may pay dues at show. 1st reading will in April, second reading and membership will be in May. Name tags will be given to new members at 3rd meeting they attend. Voting was unanimous..

Rocky Metts will be responsible for setting up training while Pat Ziegler is ill.

Please let Sunshine lady know if some one needs a card—Lola Betty—423-9764.

Three awards were presented for NFMS Bulletin Competition — First place—Dr. Carl and Barbara Austin for Original Adult Article, Advanced; First place—Jim Glenn for Original Adult article; Second Place—Shirley Metts—Bulletin editor — for the Bulletin .

Installation of officers for 2012. Oath was read by nominating chairman Bob Sellers. Rocky Metts, President; Dave Hughes, Vice-President; Wilma Sellers, Secretary; Susana Lewis, Treasurer; Shirley Metts, Bulletin Editor; Barbra Livingston (absent), Federation Director, DeVonne Bates, Field Marshall, Shirley Metts, Show Chairman.

Door prize brought by Norma Berkeley, won by Terry Folks.

Minutes respectfully submitted by Wilma Sellers, Secretary

Dear Friends, Our Rockhounding hobby brings joy, fellowship and satisfaction in many ways. Please be inclusive in your dealings with others. Cliques and exclusions of others leads only to hurt feelings, misunderstandings, and reduced club activity. Many types of clubs have failed when this occurs. There are times when not everyone can be involved in an outing and common courtesy would require you not to discuss the outing unless you are willing to take others. When you were a child, the hardest thing to teach you by your parents was to share. However, learning to share with others has brought you more joy and happiness than having all your toys to yourself. Please keep in mind how you felt when being excluded, whether real or imagined. God made lots of rocks. There are plenty for everyone. Let's share and grow and develop new friendships. Your Prez, Rocky

We are now able to send the Magic Valley Gem News via e-mail. If you are not already receiving the newsletter via email and are willing to, please email me at rmetts@cableone.net. Help us save some money on mailings. Thank you. Shirley

DO YOU REALIZE THAT OUR SHOW IS ONLY 2 MONTHS AWAY?

It's not too early to be making items for the show -

**Wheel of Fortune-1
Wheel of Fortune —2,
Silent Auction,
Grab Bags,
Sand Dig for Gems
Door Prizes**

**Magic Valley Gem Show
March 10 and 11, 2012
Twin Falls County Fairgrounds — Filer, ID**

**FIRST CLASS
TIME DATED
MATERIAL**



January, 2012

**MAGIC VALLEY GEM NEWS
SHIRLEY METTS, EDITOR
550 SOUTH MAIN STREET
KIMBERLY, ID 83341**